

### Features:

- ❖ Low Power Consumption – 10% of Incandescent Lamps.
- ❖ Constant Brightness. Instantaneous (Zero Warm up).
- ❖ Longer Life – 50,000+ hours , Low Maintenance
- ❖ Fits Directly into Standard Sockets
- ❖ Cool White
- ❖ View angle: 120°. Great uniform color appearance.
- ❖ Meets IS 3646 (Part 1):1992 Standard
- ❖ Low voltage 12V/24V DC operated Lamps available.
- ❖ No IR & UV radiation. RoHs compliant.
- ❖ Meets IEC safety standards.

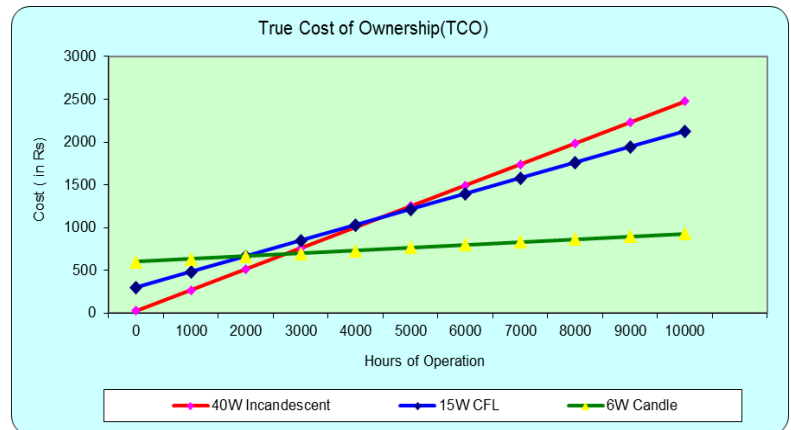
### Application:

- ❖ Ideal for Residential use, Bed Rooms, Bath Rooms, Kitchen and wherever incandescent is in use.
- ❖ Huge benefits to use it in Hotels, shops, restaurants, cinema theaters , libraries, schools as long operational hours leads to short pay-back time.
- ❖ Inaccessible locations such as high raise ceilings, reception halls, display rooms. chandeliers. no need to replace.

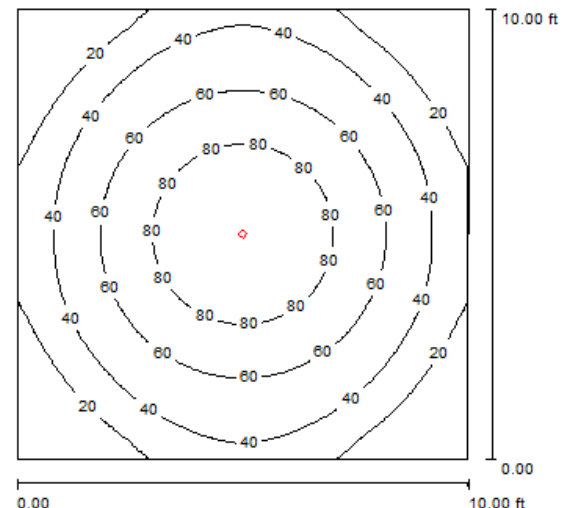


### TECHNICAL SPECIFICATIONS

Operating Voltage	80 - 270V AC/DC
Power Consumption	6W (Incl of Driver Losses)
LED Make	Nichia
Color Temperature (CCT)	6500K(CW)
Color Rendering Index (CRI)	(Ra) > 75
LED Efficacy	80 - 140 lm/W
Luminous flux	480 - 720 Lumens
Beam Angle	120 Deg
Expected Life Time	> 50,000 Hours
Material	Aluminum / Poly Carbonate Diffuser
Base Type	E14
Lamp Shade	Transparent Clear / Milky White
Additional Colors	Only Cool White
Working Temperature(°C)	-20 to +45
Country of Origin	India
Safety Standards	Confirms to IS and IEC Safety Specifications



**Lux Level - 10ft x 10ft Clean Room at 8ft mounting height**



**HELIOS LED LIGHTRONICS (P) LTD**  
**TS 69, SIDCO Industrial Estate, Ekkaduthangal**  
**Chennai - 600 032 India**  
**44-42611200**  
**7299924902/6**  
**email: [marketing@heliosledlightronics.com](mailto:marketing@heliosledlightronics.com)**  
**[www.heliosledlightronics.com](http://www.heliosledlightronics.com)**